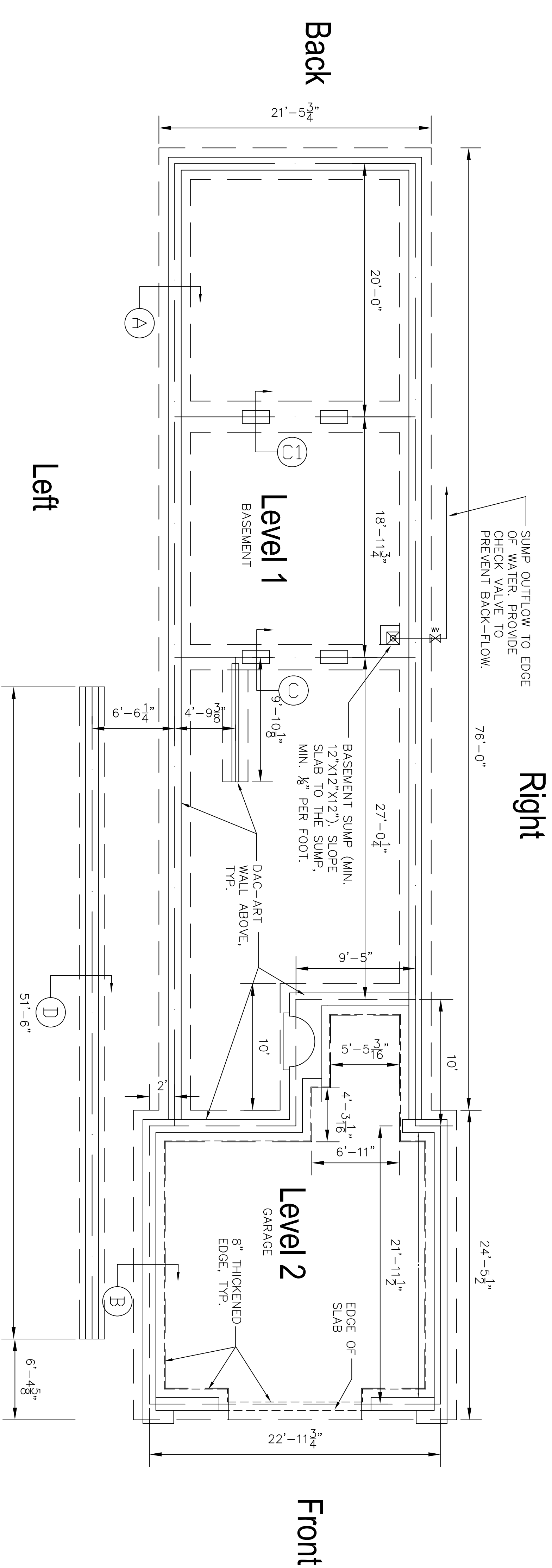


**FOUNDATION NOTES:**

1. CONCRETE COMPRESSIVE STRENGTH AT 28 DAYS: 3000 PSI --- NORMAL WEIGHT --- UNLESS NOTED WATER / CEMENT RATIO 0.45 OR LESS
2. REINFORCING BARS ASTM A615 GRADE 60, #4 OR #5, OR WELDED WIRE FABRIC (W/W) ASTM A185, 6 x 6 W/ #4 TIE, OR WELDED AS NOTED
3. REINFORCING BAR PLACING ACCESSORIES IN ACCORDANCE WITH ACI MANUAL OF STANDARD PRACTICE.
4. DETAIL REINFORCEMENT IN ACCORDANCE WITH ACI 318. REINFORCEMENT SHALL NOT BE WELDED UNLESS NOTED OR APPROVED BY THE ENGINEER.
5. LAP ALL REINFORCEMENT SPLICES A MINIMUM OF 30 BAR DIAMETERS BUT NOT LESS THAN 1'-0" UNLESS NOTED.
6. CONCRETE COVERAGE OF REINFORCEMENT, GRADE BEAMS --- 3" BOTTOM AND SIDES; 2" TOP
7. EARTH SUPPORTED SLABS, INCLUDING EXTERIOR WALK OFF SLABS, SHALL BE REINFORCED WITH W/ #2 @ 24" O.C. AT MID-DEPTH OF SLAB, UNLESS NOTED
8. CONCRETING OPERATIONS SHALL COMPLY WITH ACI STANDARDS.
9. ALL UNDERSLAB AREAS TO BE TREATED FOR TERMITES BY A LICENSED APPLICATOR, OWNER TO RECEIVE RENEWABLE BOND.
10. ALL FOOTINGS TO BEAR ON UNDISTURBED SOIL, OR COMPACTED FILL OF 95% STD. PROCTOR DENSITY.
11. A MINIMUM OF ONE (1) ANCHOR BOLT SHALL BE REQUIRED WITHIN 6" TO 12" INCHES OF EACH END OF FOUNDATION AND SLAB ON GRADE OR 15" INCHES IN MASONRY BLOCK FOUNDATION. ANCHOR BOLTS SHALL BE LOCATED WITHIN 12" INCHES OF CORNERS AND AT 58" O.C. INTERIOR LENGTH.
12. CONSTRUCTION AND/OR CONTROL JOINTS ARE INTERCHANGEABLE AT THE CONTRACTOR'S OPTION. SEE PLANS FOR LAYOUT OF CONSTRUCTION AND/OR CONTROL JOINTS (20' O.C. MAX). JOINTS LOCATED AT COLUMN CENTER LINES ARE CONSIDERED OPTIMUM.
13. DO NOT LOCATE CONSTRUCTION AND/OR CONTROL JOINTS BELOW MASONRY WALLS.
14. SAW CUTTING OF JOINTS SHALL BE AS SOON AS THE CONCRETE SETS SUFFICIENTLY TO PERMIT CUTTING WITHOUT CHIPPING, SPALLING, OR TEARING, BUT NOT MORE THAN 24 HOURS AFTER PLACING.
15. JOINT FILLERS/SEALERS SHALL BE AN ELASTOMERIC JOINT GEAR TIGHT FOR RADON ELIMINATION SYSTEM.
16. VAPOR BARRIER SHALL BE 10 MIL POLY X SHEETING OR EQUIVALENT (OVERLAP SEAMS 12" MIN).

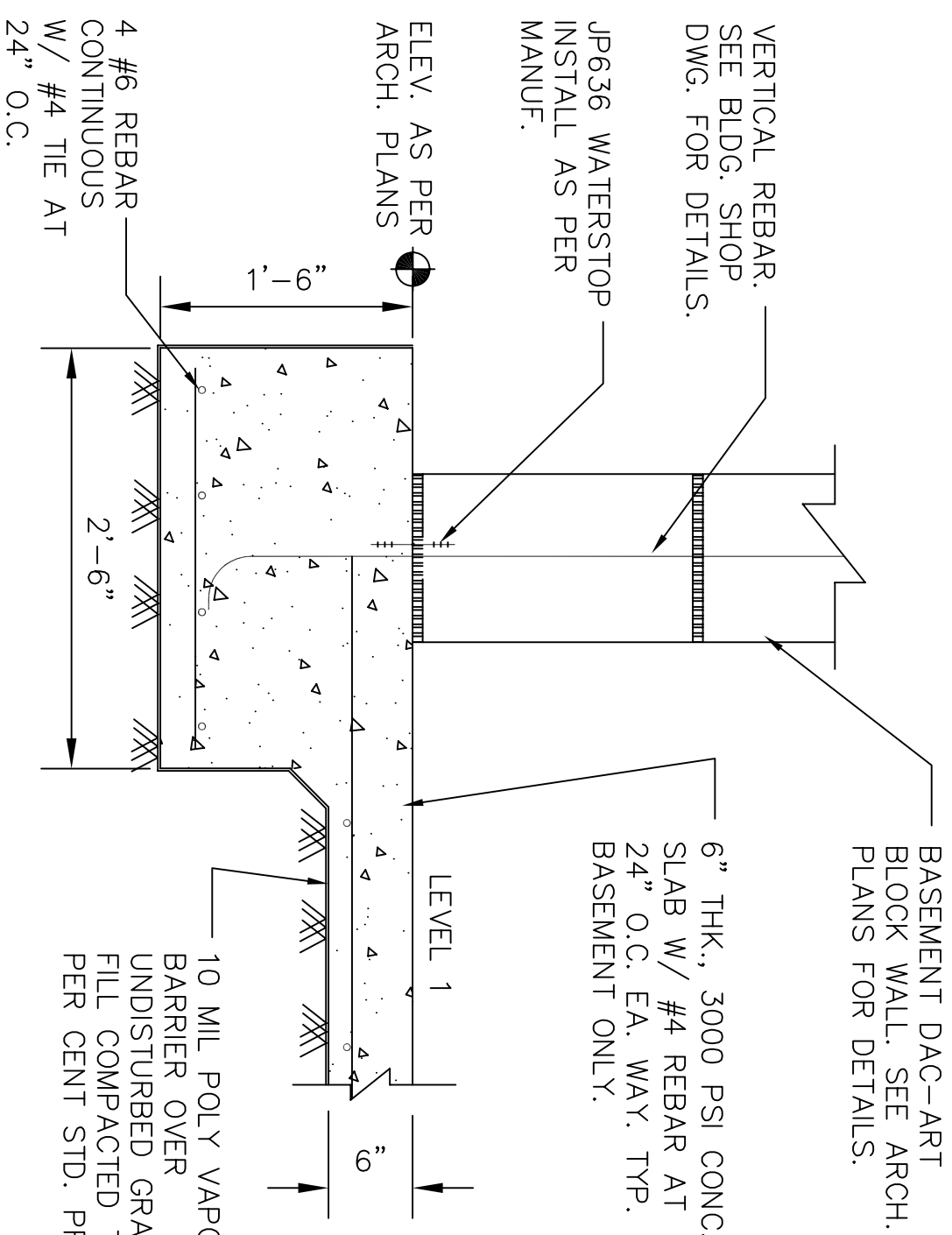
**FOUNDATION PLAN**

SCALE: 3/16" = 1'



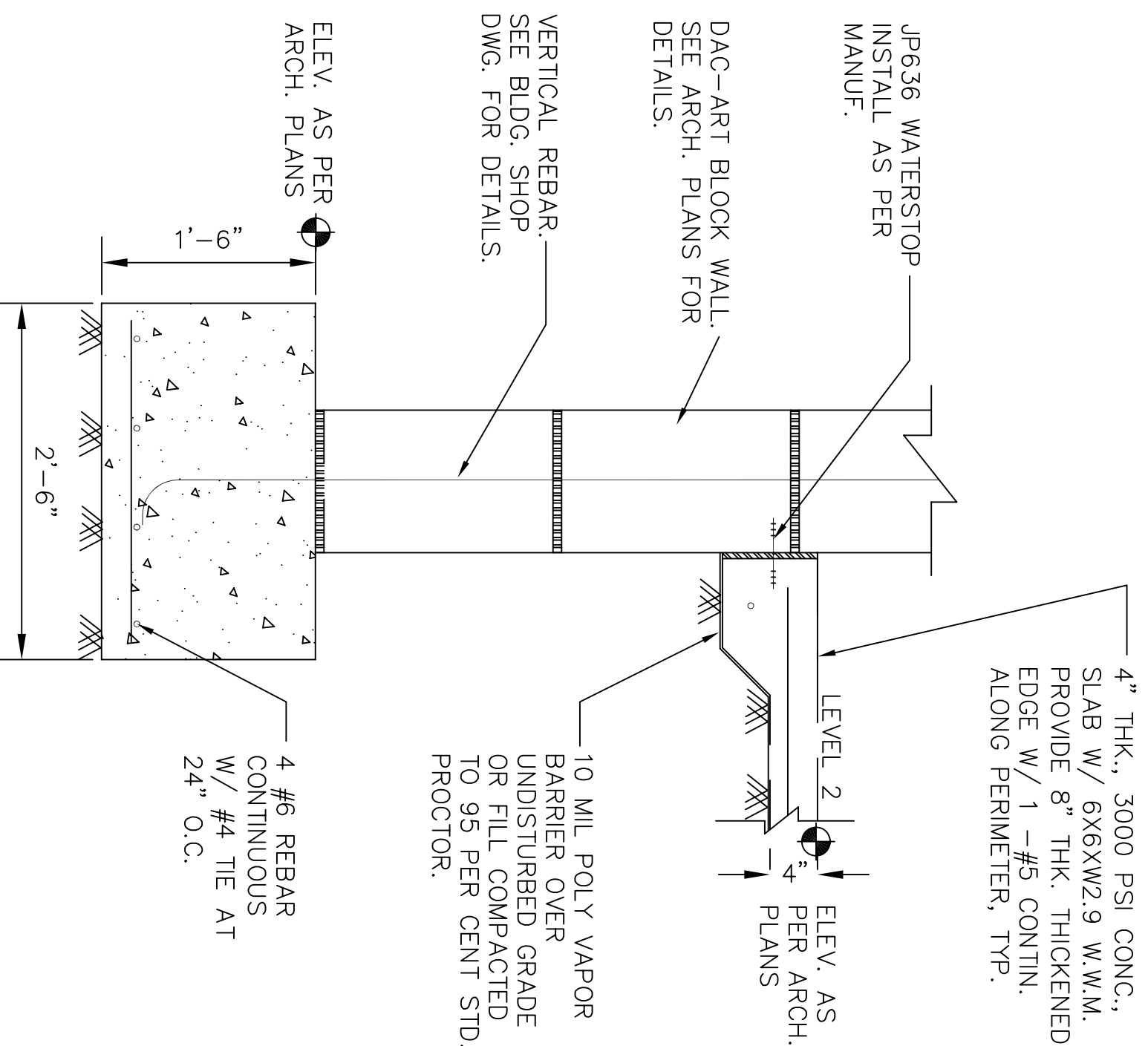
**SECTION DETAIL 'A'**

SCALE: 3/16" = 1'



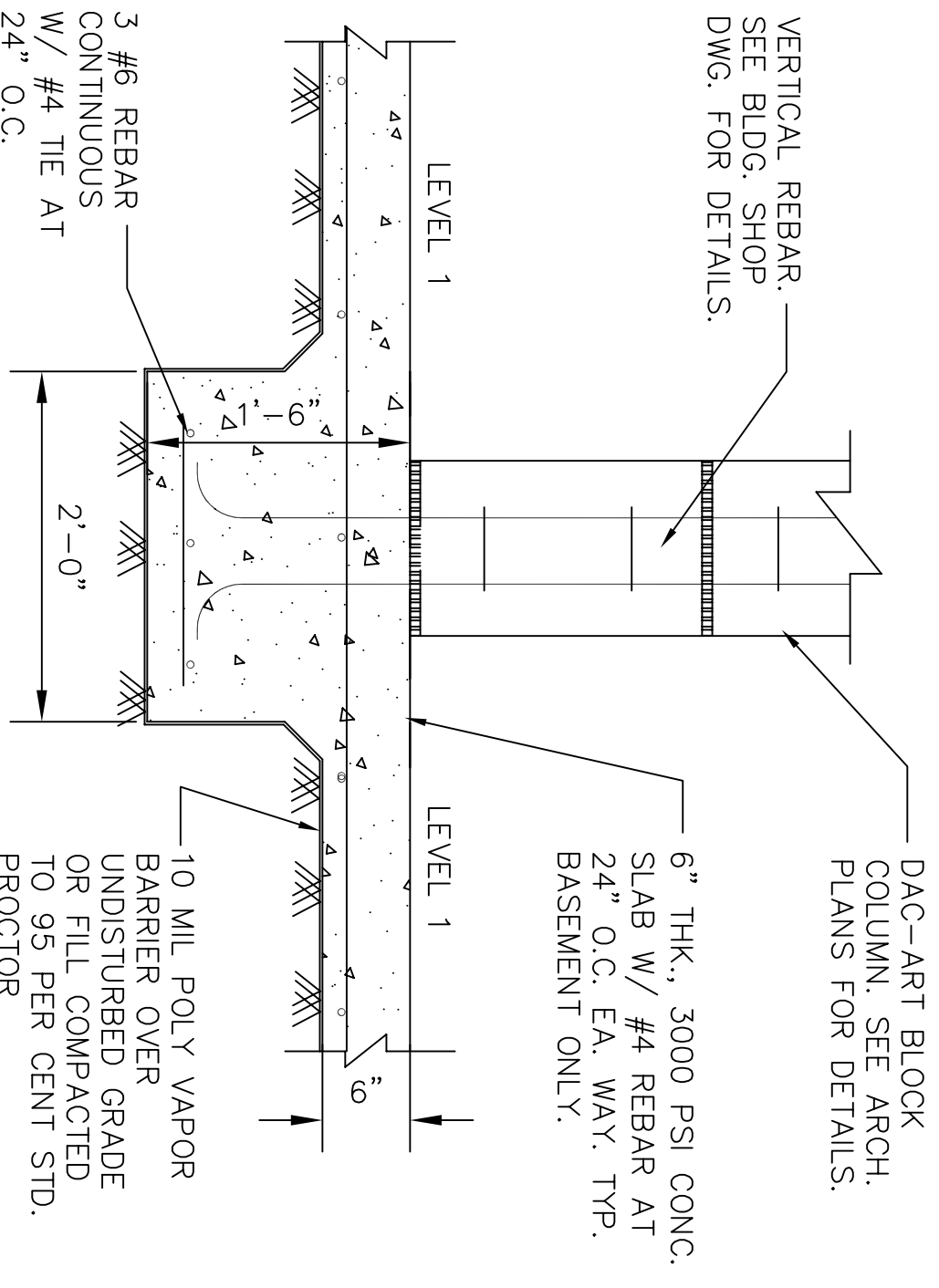
**SECTION DETAIL 'B'**

SCALE: 3/16" = 1'



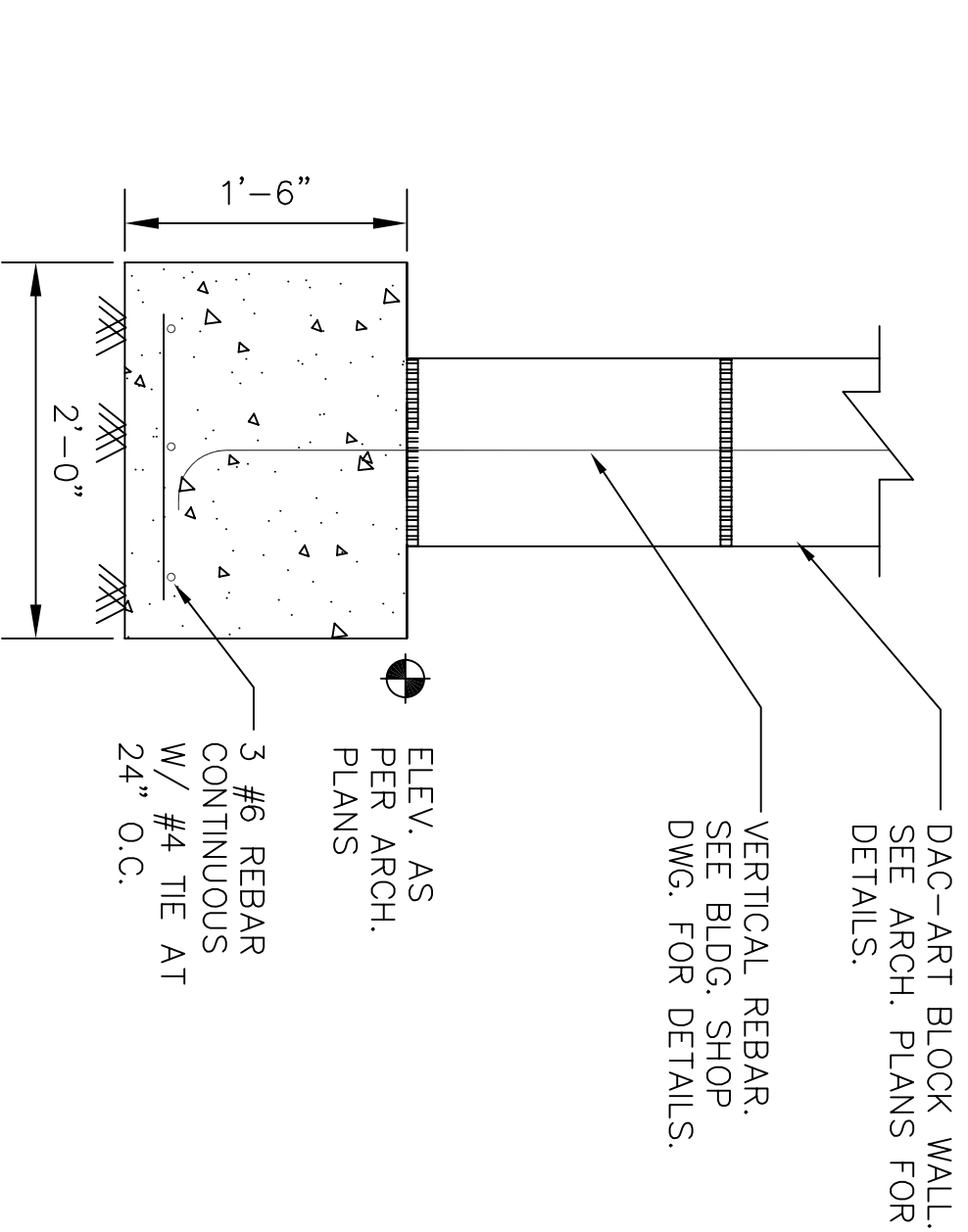
**SECTION DETAIL 'C'**

SCALE: 3/16" = 1'



**SECTION DETAIL 'D'**

SCALE: 3/16" = 1'



NOTE: DETAIL 'C' GRADE BEAM TO MATCH DETAIL 'B'.

**FOUNDATION PLAN**  
**WILDER RESIDENCE**  
GULF SHORES, ALABAMA

**ANIL BADVE & ASSOCIATES**  
DESIGN, PLANNING, CONSULTING  
CONSTRUCTION MANAGEMENT  
1300 N. MCKENZIE ST.  
P. O. BOX 554  
FOLEY, ALABAMA 36536  
TEL./FAX: (251)943-5052/661-2394  
E-MAIL: anilbadve@hotmail.com

**REVISIONS**

DATE DESCRIPTION

DRAWN BY: AB  
DESIGNED BY: ANIL B.  
CHECKED BY:

SCALE: AS SHOWN  
DATE: MAY 2007  
DWG. FILE: WR1dn

SHEET NO. 1 OF 1